

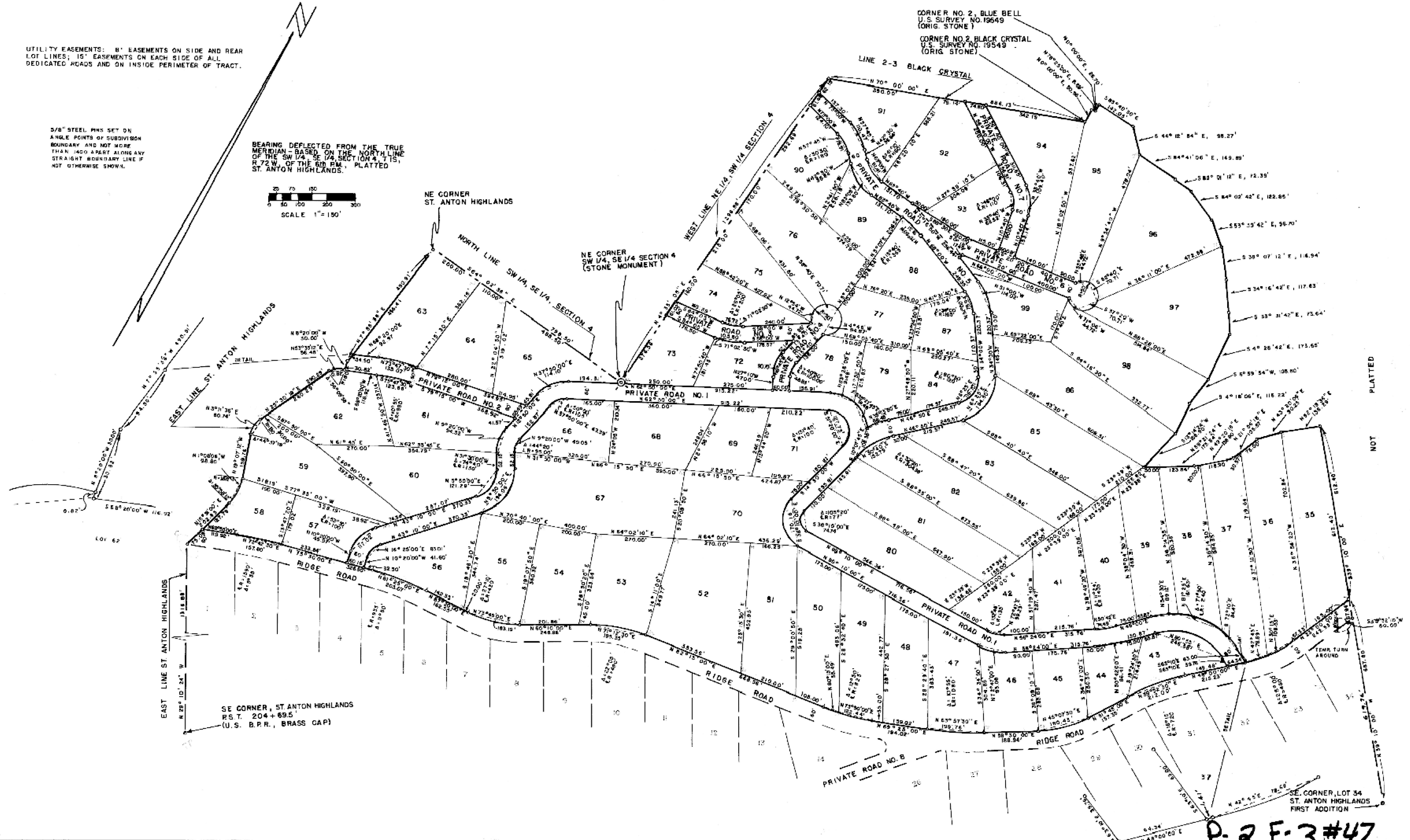
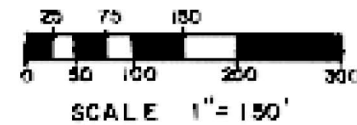
# ST. ANTON HIGHLANDS, FIRST ADDITION

A SUBDIVISION OF A PART OF SECTIONS 3, 4, 9, & 10,  
T 1S, R 72W OF THE 6th P. M.,  
BOULDER COUNTY, COLORADO  
(Sheet 2 of 2)

UTILITY EASEMENTS: 8' EASEMENTS ON SIDE AND REAR LOT LINES; 15' EASEMENTS ON EACH SIDE OF ALL DEDICATED ROADS AND ON INSIDE PERIMETER OF TRACT.

5/8" STEEL PINS SET ON ANGLE POINTS OF SUBDIVISION BOUNDARY AND NOT MORE THAN 1/2" PART ALONG ANY STRAIGHT BOUNDARY LINE IF NOT OTHERWISE SHOWN.

BEARING DEFLECTED FROM THE TRUE MERIDIAN - BASED ON THE NORTH LINE OF THE SW 1/4, SE 1/4, SECTION 4, T 1S, R 72 W, OF THE 6th P.M., PLATTED ST. ANTON HIGHLANDS.



PLATTED NOT

P-2 F-3 #47

Recorded - Plan File R-2-3-46-47  
#1 of 2